



The design included two modern contemporary courtyards for Pyrotek's International Headquarters. Both were large deep window wells with pedestrian bridges overhead leading from the street to building entrances. (East Courtyard)



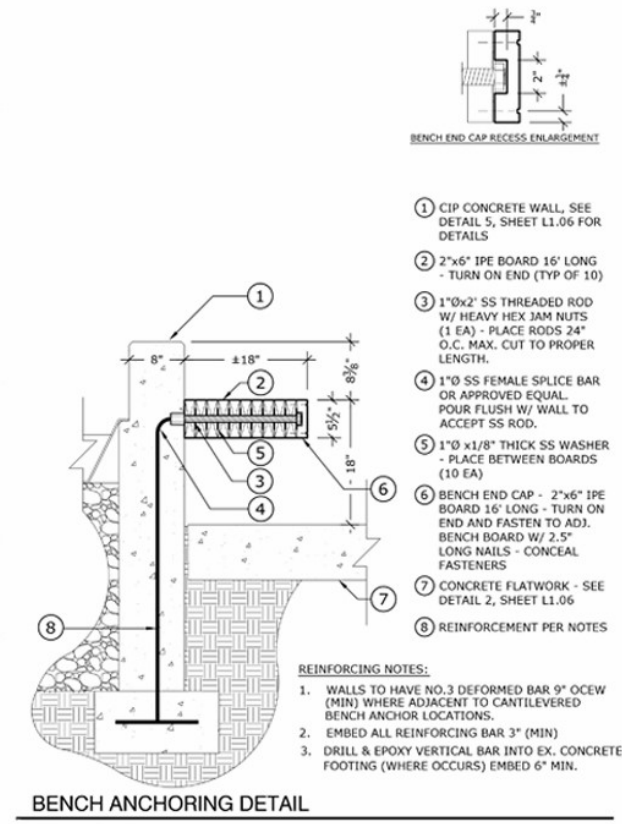
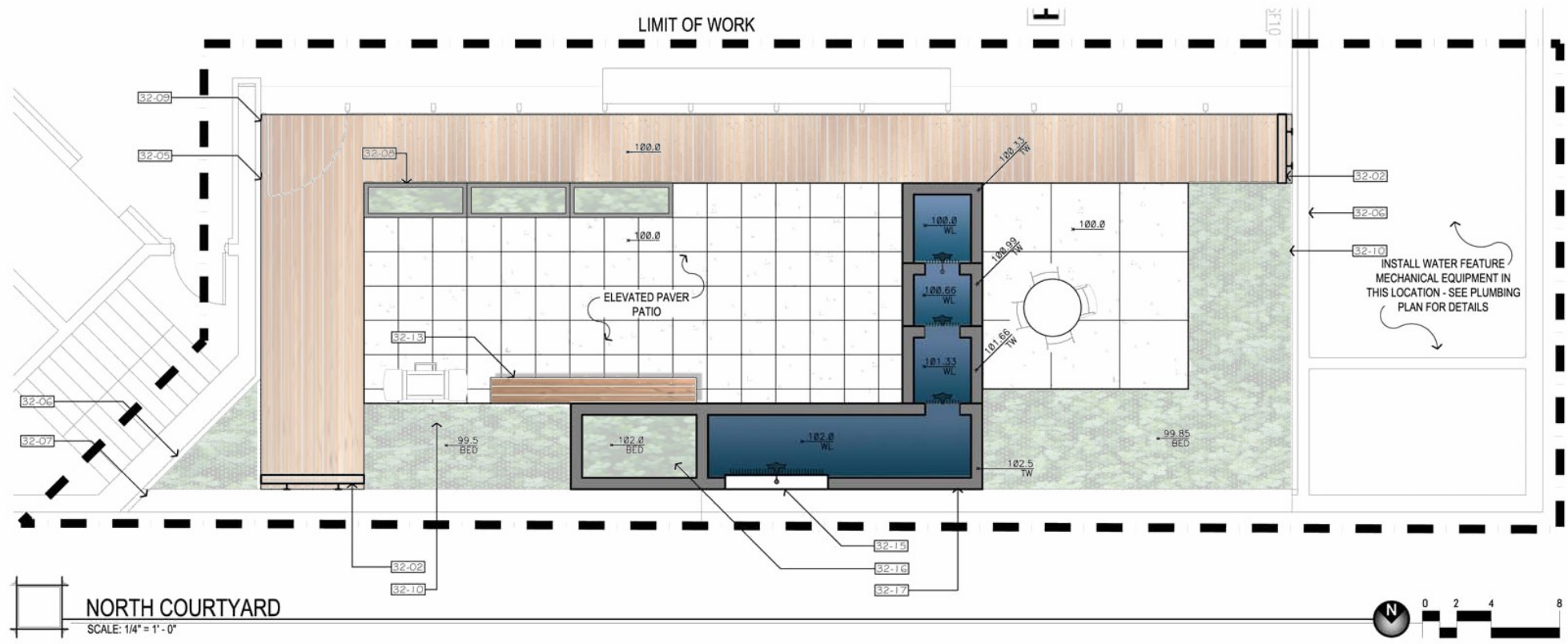
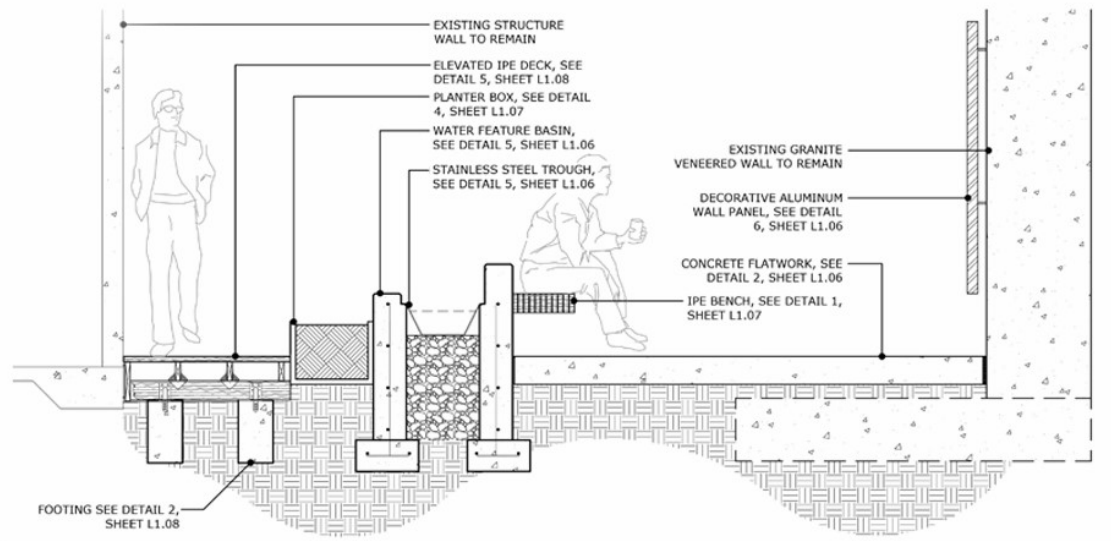
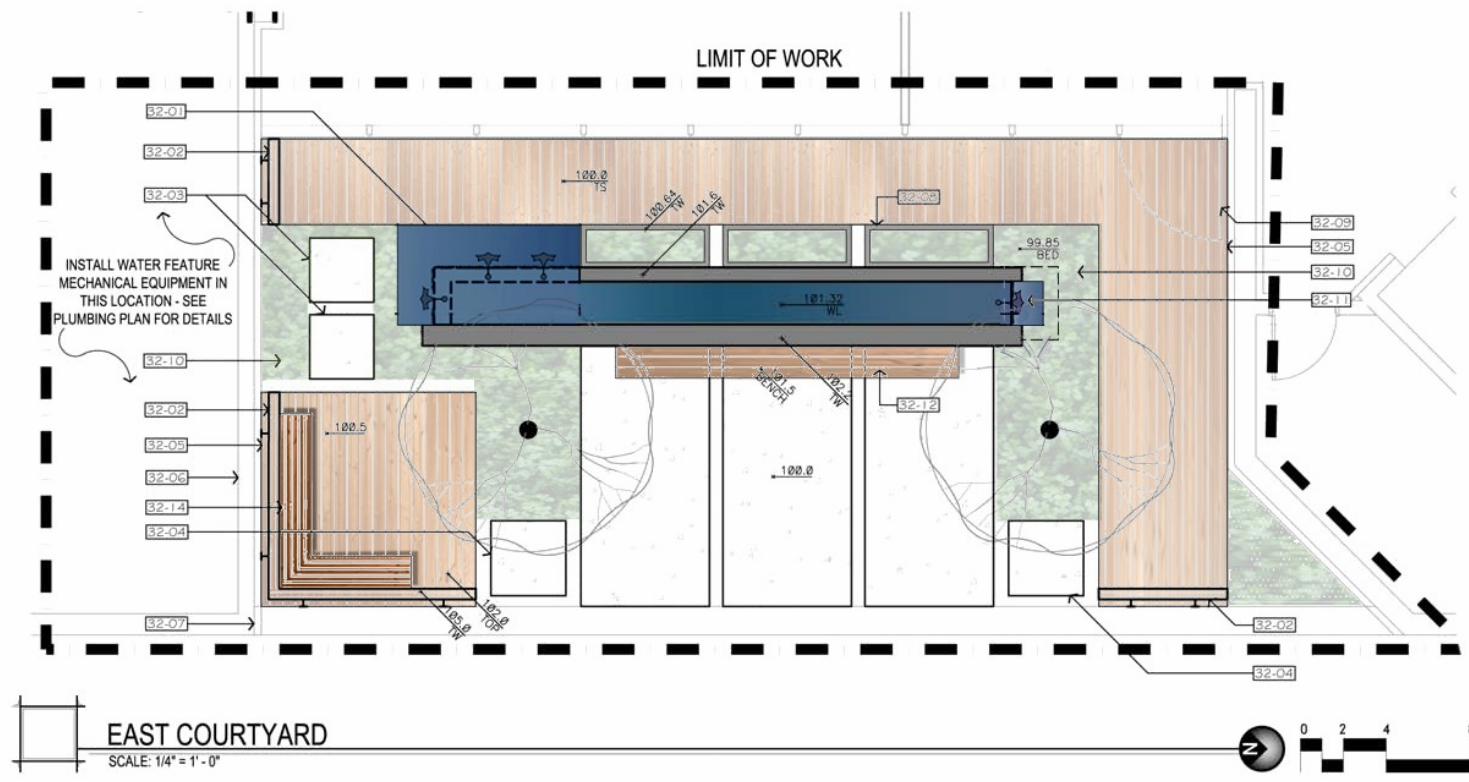
The existing areas, almost 20 feet below street level were cold, stark, and uninviting. Access was a challenge as were solid bedrock, drainage, shade and finding space for mechanical, and water storage for the two water features. (East Courtyard)



Viewed from street and pedestrian bridges, the project design had to be strong enough to stand up to the strong lines and light/dark contrast of the modern building. (East Courtyard)



International visitors view the courtyard from the main building entrance bridge. It was essential that the project represent the company culture in clean simple lines and as an employee amenity. Note the interior exercise room enjoying natural light. (East Courtyard)



PYROTEK OFFICE BUILDING
705 W FIRST AVE.
SPOKANE, WA
COURTYARD SITE PLAN

DATE: 10.03.15
REVISED:

PROJECT NO: 131029
PROJECT MGR: BE
DRAWN BY: NAH

Planning the way materials and shapes relate the two courtyards, in an easily understood drawing for the client.



Qualifications and concepts were to be submitted with preliminary budgets. Renderings and fly-through videos helped the client visualize the space and meet their desire for a highly creative solution.





Visually warming the space, Ipe wood was used for flooring and wall cladding. This provided level patios without grade breaks and eliminated steps between interior and exterior transitions. (East Courtyard)



The finished floor surface is only slightly above the building's footings. An elevated paver system designed for rooftop patios, created level patio and deck space above the sloped concrete drainage system. (North Courtyard)



Pyrotek is a leader in the global aluminum industry. To represent them, the design included aluminum and other metals in the water features, custom planters and site furnishings. (North courtyard)



In the north courtyard, under the bridge, the elevated paver system and other construction materials are used again for continuity but the massing is changed. (North courtyard)



The water feature is used to define and separate the space into areas for smaller groups. Bamboo will grow tall to soften the stark wall. (North courtyard)



Sheet falls mute street noise, but in this small walled reverberating area must be kept small enough to not inhibit conversation. Existing wall alcoves were re-purposed for ambient lighting. (North courtyard)



Pyrotek found the bold lines and sleek durable materials were excellent in representing their company image, and a successful solution for a functional and aesthetically successful outdoor space. (East courtyard)